

Torch 2g Hash Hole - Peach Ringz

Sample ID: HR20240790892

Strain: Peach Ringz

Matrix: Plant

Type: Hemp

Sample Size: ; Batch:

Produced:

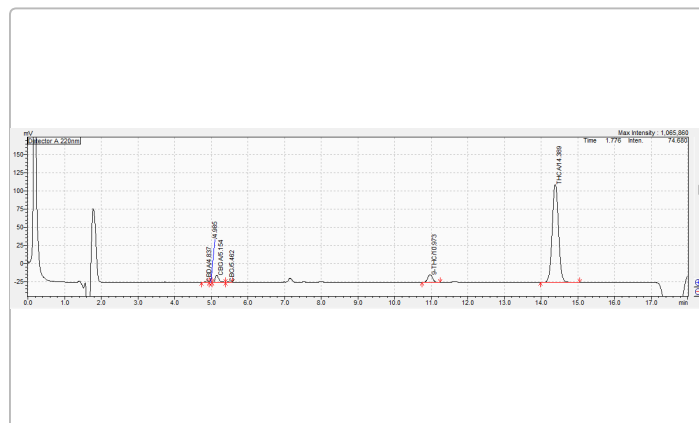
Collected:

Received: 07/30/2024

Completed: 07/31/2024

Batch#:

Client



Summary

Test

Batch

Cannabinoids

Date Tested

07/30/2024

Result

Pass

Pass

Cannabinoids

Pass

0.28%	1.98%	27.84%
Δ9-THC	Total CBD	Sum of Total Cannabinoids

Analyte	LOD	LOQ	Mass	Mass
	mg/g	mg/g	%	mg/g
THCa	0.20000	0.61000	25.32	253.20
Δ9-THC	0.15000	0.45000	0.28	2.81
Δ8-THC	0.14000	0.42000	ND	ND
THCV	0.15000	0.44000	ND	ND
CBDa	0.10000	0.31000	2.12	21.20
CBD	0.15000	0.45000	0.12	1.20
CBN	0.16000	0.50000	ND	ND
CBGa	0.29000	0.88000	ND	ND
CBG	0.13000	0.39000	ND	ND
CBC	0.14000	0.42000	ND	ND
Total THC			22.49	224.87
Total CBD			1.98	19.79
Total			24.47	244.66

Determination of Cannabinoids by HPLC, HL223

Total THC = Δ9-THCa * 0.877 + Δ9-THC

Total CBD = CBDa * 0.877 + CBD

ND = Not Detected; NR = Not Reported; LOD = Limit of Detection; The reported result is based on a sample weight with the applicable moisture content for that sample; Unless otherwise stated all quality control samples performed within specifications established by the Laboratory. HL105.10-01. Cannabinoid Testing: Pass/Fail decision determined by Department of Cannabis Control CCR title 4 Division 19 §15724. Water activity testing: Pass/Fail decision determined by Department of Cannabis Control CCR title 4 Division 19 §15717.

Ming Li

Ming Li - General Manager

07/31/2024

ISO 17025 accredited by A2LA (Certificate No: 4074.01 & 4074.02). Sampling Procedure: SOP HL 110.2; Foreign Material: UV light/Microscope SOP HL 323, SOP HL 324; Water Activity: Water Activity Meter SOP HL 238; Moisture: Drying Oven SOP HL217.1; All LQC ran in accordance with 4 CCR sec. 15730. This product has been tested by Harrens Lab Inc. using valid testing methodologies and a quality system as required by state law. Values reported relate only to the product tested. Harrens Lab Inc. makes no claims as to the efficacy, safety or other risks associated with any detected or non-detected levels of any compounds reported herein. This Certificate shall not be reproduced except in full, without the written approval of Harrens Lab Inc.

Torch 2g Hash Hole - Mango Sherbert

Sample ID: HR20240790893

Strain: Mango Sherbert

Matrix: Plant

Type: Hemp

Sample Size: ; Batch:

Produced:

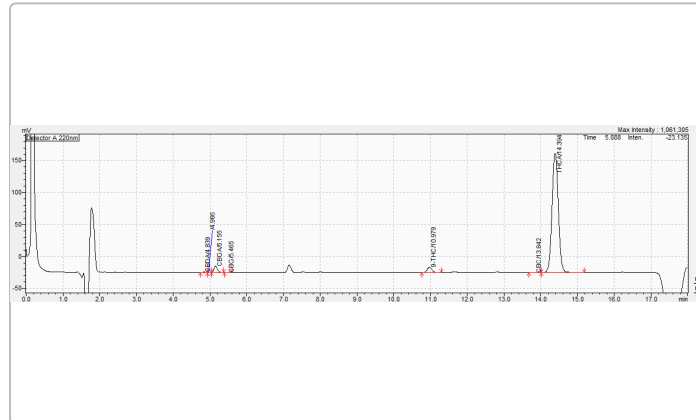
Collected:

Received: 07/30/2024

Completed: 07/31/2024

Batch#:

Client



Summary

Test

Batch

Cannabinoids

Date Tested

07/30/2024

Result

Pass

Pass

Cannabinoids

Pass

0.25%	1.24%	25.31%
Δ9-THC	Total CBD	Sum of Total Cannabinoids

Analyte	LOD mg/g	LOQ mg/g	Mass %	Mass mg/g
THCa	0.20000	0.61000	23.67	236.70
Δ9-THC	0.15000	0.45000	0.25	2.46
Δ8-THC	0.14000	0.42000	ND	ND
THCV	0.15000	0.44000	ND	ND
CBDa	0.10000	0.31000	1.25	12.50
CBD	0.15000	0.45000	0.14	1.40
CBN	0.16000	0.50000	ND	ND
CBGa	0.29000	0.88000	ND	ND
CBG	0.13000	0.39000	ND	ND
CBC	0.14000	0.42000	ND	ND
Total THC			21.00	210.05
Total CBD			1.24	12.36
Total			22.24	222.41

Determination of Cannabinoids by HPLC, HL223

Total THC = Δ9-THCa * 0.877 + Δ9-THC

Total CBD = CBDa * 0.877 + CBD

ND = Not Detected; NR = Not Reported; LOD = Limit of Detection; The reported result is based on a sample weight with the applicable moisture content for that sample; Unless otherwise stated all quality control samples performed within specifications established by the Laboratory. HL105.10-01. Cannabinoid Testing: Pass/Fail decision determined by Department of Cannabis Control CCR title 4 Division 19 §15724. Water activity testing: Pass/Fail decision determined by Department of Cannabis Control CCR title 4 Division 19 §15717.

Ming Li

Ming Li - General Manager
07/31/2024

ISO 17025 accredited by A2LA (Certificate No: 4074.01 & 4074.02). Sampling Procedure: SOP HL 110.2; Foreign Material: UV light/Microscope SOP HL 323, SOP HL 324; Water Activity: Water Activity Meter SOP HL 238; Moisture: Drying Oven SOP HL217.1; All LQC ran in accordance with 4 CCR sec. 15730. This product has been tested by Harrens Lab Inc. using valid testing methodologies and a quality system as required by state law. Values reported relate only to the product tested. Harrens Lab Inc. makes no claims as to the efficacy, safety or other risks associated with any detected or non-detected levels of any compounds reported herein. This Certificate shall not be reproduced except in full, without the written approval of Harrens Lab Inc.

Torch 2g Hash Hole - Grapefruit Romulan

Sample ID: HR20240790894

Strain: Grapefruit Romulan

Matrix: Plant

Type: Hemp

Sample Size: ; Batch:

Produced:

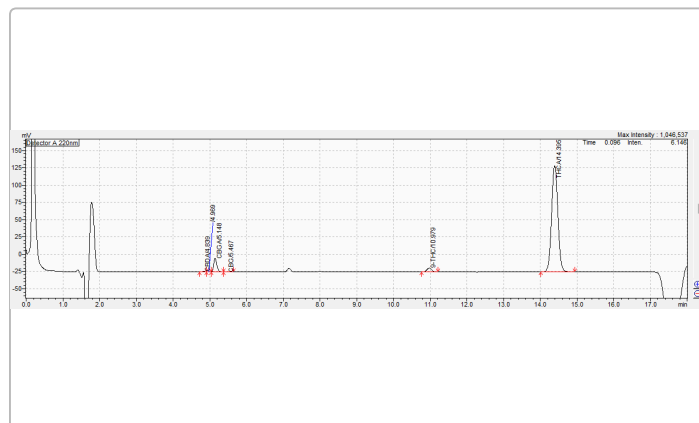
Collected:

Received: 07/30/2024

Completed: 07/31/2024

Batch#:

Client



Summary

Test

Batch

Cannabinoids

Date Tested

07/30/2024

Result

Pass

Pass

Cannabinoids

Pass

0.28%	1.25%	28.00%
Δ9-THC	Total CBD	Sum of Total Cannabinoids

Analyte	LOD mg/g	LOQ mg/g	Mass %	Mass mg/g
THCa	0.20000	0.61000	26.32	263.20
Δ9-THC	0.15000	0.45000	0.28	2.83
Δ8-THC	0.14000	0.42000	ND	ND
THCV	0.15000	0.44000	ND	ND
CBDa	0.10000	0.31000	1.24	12.40
CBD	0.15000	0.45000	0.16	1.60
CBN	0.16000	0.50000	ND	ND
CBGa	0.29000	0.88000	ND	ND
CBG	0.13000	0.39000	ND	ND
CBC	0.14000	0.42000	ND	ND
Total THC			23.37	233.66
Total CBD			1.25	12.47
Total			24.61	246.13

Determination of Cannabinoids by HPLC, HL223

Total THC = Δ9-THCa * 0.877 + Δ9-THC

Total CBD = CBDa * 0.877 + CBD

ND = Not Detected; NR = Not Reported; LOD = Limit of Detection; The reported result is based on a sample weight with the applicable moisture content for that sample; Unless otherwise stated all quality control samples performed within specifications established by the Laboratory. HL105.10-01. Cannabinoid Testing: Pass/Fail decision determined by Department of Cannabis Control CCR title 4 Division 19 §15724. Water activity testing: Pass/Fail decision determined by Department of Cannabis Control CCR title 4 Division 19 §15717.

Ming Li

Ming Li - General Manager
07/31/2024

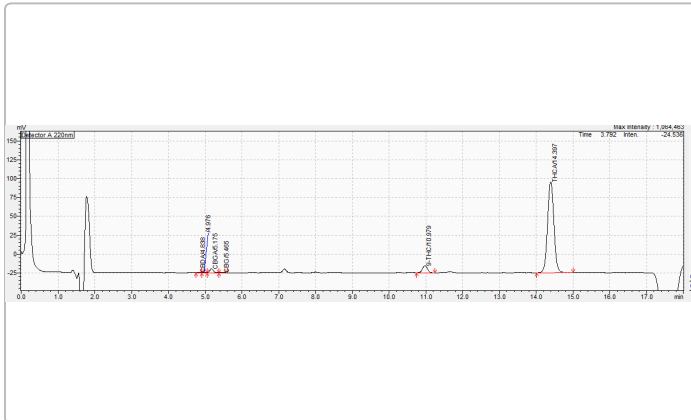
ISO 17025 accredited by A2LA (Certificate No: 4074.01 & 4074.02). Sampling Procedure: SOP HL 110.2; Foreign Material: UV light/Microscope SOP HL 323, SOP HL 324; Water Activity: Water Activity Meter SOP HL 238; Moisture: Drying Oven SOP HL217.1; All LQC ran in accordance with 4 CCR sec. 15730. This product has been tested by Harrens Lab Inc. using valid testing methodologies and a quality system as required by state law. Values reported relate only to the product tested. Harrens Lab Inc. makes no claims as to the efficacy, safety or other risks associated with any detected or non-detected levels of any compounds reported herein. This Certificate shall not be reproduced except in full, without the written approval of Harrens Lab Inc.

Torch 2g Hash Hole - Strawberry Sour Diesel

Sample ID: HR20240790895
Strain: Strawberry Sour Diesel
Matrix: Plant
Type: Hemp
Sample Size: ; Batch:

Produced:
Collected:
Received: 07/30/2024
Completed: 07/31/2024
Batch#:

Client



Summary

Test
Batch
Cannabinoids

Date Tested
07/30/2024

Result
Pass
Pass

Cannabinoids

Pass

0.25%	0.19%	24.01%
Δ9-THC	Total CBD	Sum of Total Cannabinoids

Analyte	LOD mg/g	LOQ mg/g	Mass %	Mass mg/g
THCa	0.20000	0.61000	23.56	235.60
Δ9-THC	0.15000	0.45000	0.25	2.46
Δ8-THC	0.14000	0.42000	ND	ND
THCV	0.15000	0.44000	ND	ND
CBDa	0.10000	0.31000	0.12	1.23
CBD	0.15000	0.45000	0.08	0.80
CBN	0.16000	0.50000	ND	ND
CBGa	0.29000	0.88000	ND	ND
CBG	0.13000	0.39000	ND	ND
CBC	0.14000	0.42000	ND	ND
Total THC			20.91	209.08
Total CBD			0.19	1.88
Total			21.10	210.96

Determination of Cannabinoids by HPLC, HL223

Total THC = Δ9-THCa * 0.877 + Δ9-THC

Total CBD = CBDa * 0.877 + CBD

ND = Not Detected; NR = Not Reported; LOD = Limit of Detection; The reported result is based on a sample weight with the applicable moisture content for that sample; Unless otherwise stated all quality control samples performed within specifications established by the Laboratory. HL105.10-01. Cannabinoid Testing: Pass/Fail decision determined by Department of Cannabis Control CCR title 4 Division 19 §15724. Water activity testing: Pass/Fail decision determined by Department of Cannabis Control CCR title 4 Division 19 §15717.

Ming Li

Ming Li - General Manager
07/31/2024

ISO 17025 accredited by A2LA (Certificate No: 4074.01 & 4074.02). Sampling Procedure: SOP HL 110.2; Foreign Material: UV light/Microscope SOP HL 323, SOP HL 324; Water Activity: Water Activity Meter SOP HL 238; Moisture: Drying Oven SOP HL217.1; All LQC ran in accordance with 4 CCR sec. 15730. This product has been tested by Harrens Lab Inc. using valid testing methodologies and a quality system as required by state law. Values reported relate only to the product tested. Harrens Lab Inc. makes no claims as to the efficacy, safety or other risks associated with any detected or non-detected levels of any compounds reported herein. This Certificate shall not be reproduced except in full, without the written approval of Harrens Lab Inc.

Torch 2g Hash Hole - Honeydew Haze

Sample ID: HR20240790896

Strain: Honeydew Haze

Matrix: Plant

Type: Hemp

Sample Size: ; Batch:

Produced:

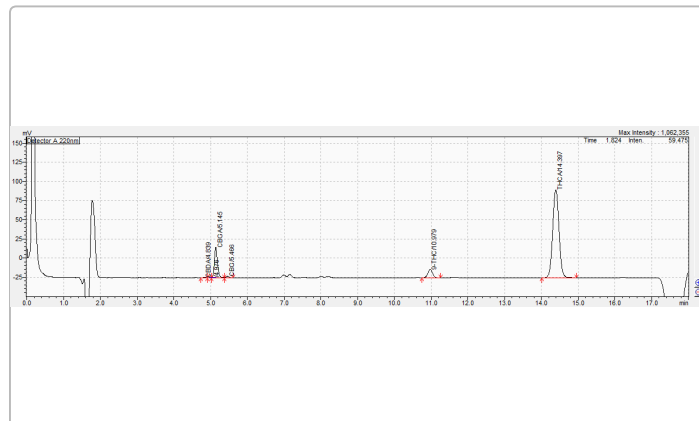
Collected:

Received: 07/30/2024

Completed: 07/31/2024

Batch#:

Client



Summary

Test

Date Tested

Result

Batch

07/30/2024

Pass

Cannabinoids

Pass

Cannabinoids

Pass

0.24%	0.25%	27.81%
Δ9-THC	Total CBD	Sum of Total Cannabinoids

Analyte	LOD	LOQ	Mass	Mass
	mg/g	mg/g	%	mg/g
THCa	0.20000	0.61000	27.31	273.10
Δ9-THC	0.15000	0.45000	0.24	2.37
Δ8-THC	0.14000	0.42000	ND	ND
THCV	0.15000	0.44000	ND	ND
CBDa	0.10000	0.31000	0.14	1.35
CBD	0.15000	0.45000	0.13	1.30
CBN	0.16000	0.50000	ND	ND
CBGa	0.29000	0.88000	ND	ND
CBG	0.13000	0.39000	ND	ND
CBC	0.14000	0.42000	ND	ND
Total THC			24.19	241.88
Total CBD			0.25	2.48
Total			24.44	244.36

Determination of Cannabinoids by HPLC, HL223

Total THC = Δ9-THCa * 0.877 + Δ9-THC

Total CBD = CBDa * 0.877 + CBD

ND = Not Detected; NR = Not Reported; LOD = Limit of Detection; The reported result is based on a sample weight with the applicable moisture content for that sample; Unless otherwise stated all quality control samples performed within specifications established by the Laboratory. HL105.10-01. Cannabinoid Testing: Pass/Fail decision determined by Department of Cannabis Control CCR title 4 Division 19 §15724. Water activity testing: Pass/Fail decision determined by Department of Cannabis Control CCR title 4 Division 19 §15717.

Ming Li

Ming Li - General Manager

07/31/2024

ISO 17025 accredited by A2LA (Certificate No: 4074.01 & 4074.02). Sampling Procedure: SOP HL 110.2; Foreign Material: UV light/Microscope SOP HL 323, SOP HL 324; Water Activity: Water Activity Meter SOP HL 238; Moisture: Drying Oven SOP HL217.1; All LQC ran in accordance with 4 CCR sec. 15730. This product has been tested by Harrens Lab Inc. using valid testing methodologies and a quality system as required by state law. Values reported relate only to the product tested. Harrens Lab Inc. makes no claims as to the efficacy, safety or other risks associated with any detected or non-detected levels of any compounds reported herein. This Certificate shall not be reproduced except in full, without the written approval of Harrens Lab Inc.

Torch 2g Hash Hole - Berry Pie

Sample ID: HR20240790897

Strain: Berry Pie

Matrix: Plant

Type: Hemp

Sample Size: ; Batch:

Produced:

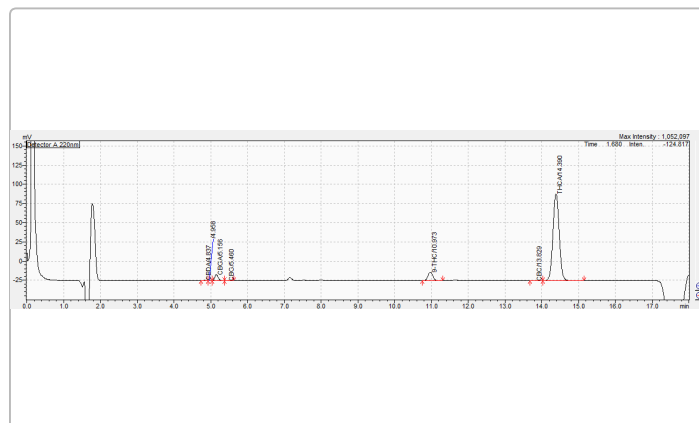
Collected:

Received: 07/30/2024

Completed: 07/31/2024

Batch#:

Client



Summary

Test

Batch

Cannabinoids

Date Tested

07/30/2024

Result

Pass

Pass

Cannabinoids

Pass

0.21%	1.21%	26.98%
Δ9-THC	Total CBD	Sum of Total Cannabinoids

Analyte	LOD	LOQ	Mass	Mass
	mg/g	mg/g	%	mg/g
THCa	0.20000	0.61000	25.41	254.10
Δ9-THC	0.15000	0.45000	0.21	2.14
Δ8-THC	0.14000	0.42000	ND	ND
THCV	0.15000	0.44000	ND	ND
CBDa	0.10000	0.31000	1.24	12.40
CBD	0.15000	0.45000	0.12	1.20
CBN	0.16000	0.50000	ND	ND
CBGa	0.29000	0.88000	ND	ND
CBG	0.13000	0.39000	ND	ND
CBC	0.14000	0.42000	ND	ND
Total THC			22.50	224.99
Total CBD			1.21	12.07
Total			23.71	237.06

Determination of Cannabinoids by HPLC, HL223

Total THC = Δ9-THCa * 0.877 + Δ9-THC

Total CBD = CBDa * 0.877 + CBD

ND = Not Detected; NR = Not Reported; LOD = Limit of Detection; The reported result is based on a sample weight with the applicable moisture content for that sample; Unless otherwise stated all quality control samples performed within specifications established by the Laboratory. HL105.10-01. Cannabinoid Testing: Pass/Fail decision determined by Department of Cannabis Control CCR title 4 Division 19 §15724. Water activity testing: Pass/Fail decision determined by Department of Cannabis Control CCR title 4 Division 19 §15717.

Ming Li

Ming Li - General Manager

07/31/2024

ISO 17025 accredited by A2LA (Certificate No: 4074.01 & 4074.02). Sampling Procedure: SOP HL 110.2; Foreign Material: UV light/Microscope SOP HL 323, SOP HL 324; Water Activity: Water Activity Meter SOP HL 238; Moisture: Drying Oven SOP HL217.1; All LQC ran in accordance with 4 CCR sec. 15730. This product has been tested by Harrens Lab Inc. using valid testing methodologies and a quality system as required by state law. Values reported relate only to the product tested. Harrens Lab Inc. makes no claims as to the efficacy, safety or other risks associated with any detected or non-detected levels of any compounds reported herein. This Certificate shall not be reproduced except in full, without the written approval of Harrens Lab Inc.