



Torch

Sample 627-082823-040

Blue Sherbet

Batch/Lot # 20230824-BS

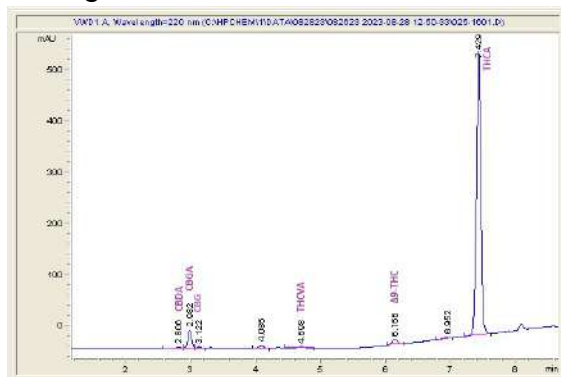
Sample Submitted: 08-28-2023; Report Date: 09-01-2023

Blue Sherbet

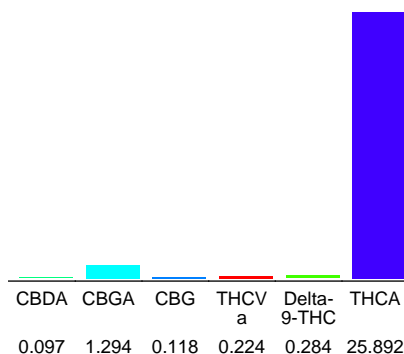
Batch/Lot # 20230824-BS

Plant Material: Flower

Chromatogram



Cannabinoid Profile



Cannabinoid Profile by HPLC

0.28%

Delta-9-THC

0.00%

CBD

27.91%

Total Cannabinoids

Cannabinoid	% wt	mg/g
CBDA	0.097	0.97
CBGA	1.294	12.94
CBG	0.118	1.18
THCVa	0.224	2.24
Delta-9-THC	0.284	2.84
THCA	25.89	258.92
Total Cannabinoids	27.91	279.1
Calculated Total THC	22.99	229.91
Calculated CBD Yield	0.09	0.85

Calculated Total THC = Delta-9-THC + 0.877 * THCA

Calculated Maximum CBD Yield = CBD + 0.877 * CBDA

Marin Analytics, LLC

250 Bel Marin Keys Blvd, Suite D4
Novato, CA 94949

833-321-TEST / info@marinanalytics.com

Sara Biancalana

Sara Biancalana
Chief Scientist

This sample has been tested by Marin Analytics, LLC using valid testing methodologies and a quality system. Values reported relate only to the sample tested. Marin Analytics, LLC makes no claims as to the efficacy, safety, or other risks associated with any detected or non-detected levels of any compounds reported herein. This Certificate shall not be reproduced except in full without the written approval of Marin Analytics, LLC. Copyright 2023 Marin Analytics, LLC All Rights Reserved.

Torch

Sample 627-082823-041

Purple Urkle

Batch/Lot # 20230824-PU

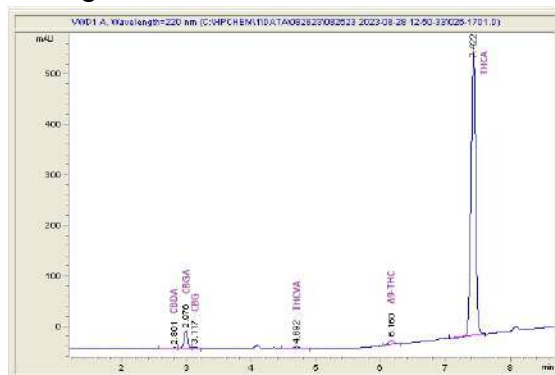
Sample Submitted: 08-28-2023; Report Date: 09-01-2023

Purple Urkle

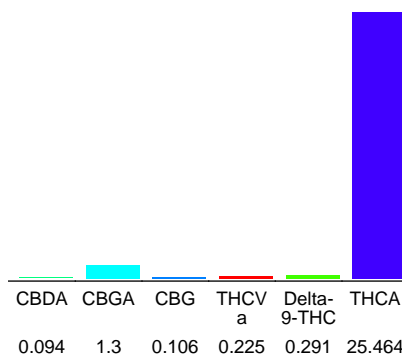
Batch/Lot # 20230824-PU

Plant Material: Flower

Chromatogram



Cannabinoid Profile



Cannabinoid Profile by HPLC

0.29%

Delta-9-THC

0.00%

CBD

27.48%

Total Cannabinoids

Cannabinoid	% wt	mg/g
CBDA	0.094	0.94
CBGA	1.3	13.0
CBG	0.106	1.06
THCVa	0.225	2.25
Delta-9-THC	0.291	2.91
THCA	25.46	254.64
Total Cannabinoids	27.48	274.8
Calculated Total THC	22.62	226.23
Calculated CBD Yield	0.08	0.82

Calculated Total THC = Delta-9-THC + 0.877 * THCA

Calculated Maximum CBD Yield = CBD + 0.877 * CBDA

Marin Analytics, LLC

250 Bel Marin Keys Blvd, Suite D4
Novato, CA 94949

833-321-TEST / info@marinanalytics.com

Sara Biancalana

Sara Biancalana
Chief Scientist

This sample has been tested by Marin Analytics, LLC using valid testing methodologies and a quality system. Values reported relate only to the sample tested. Marin Analytics, LLC makes no claims as to the efficacy, safety, or other risks associated with any detected or non-detected levels of any compounds reported herein. This Certificate shall not be reproduced except in full without the written approval of Marin Analytics, LLC. Copyright 2023 Marin Analytics, LLC All Rights Reserved.

Torch

Sample 627-082823-039

Gush Mintz

Batch/Lot # 20230824-GM

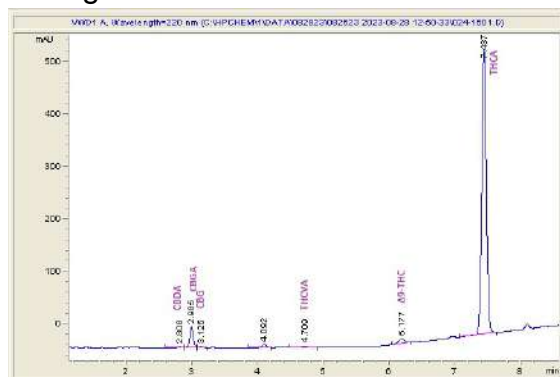
Sample Submitted: 08-28-2023; Report Date: 09-01-2023

Gush Mintz

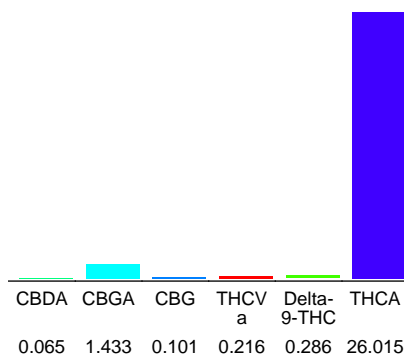
Plant Material: Flower

Batch/Lot # 20230824-GM

Chromatogram



Cannabinoid Profile



Cannabinoid Profile by HPLC

0.29%

Delta-9-THC

0.00%

CBD

28.12%

Total Cannabinoids

Cannabinoid	% wt	mg/g
CBDA	0.065	0.65
CBGA	1.433	14.33
CBG	0.101	1.01
THCVa	0.216	2.16
Delta-9-THC	0.286	2.86
THCA	26.02	260.15
Total Cannabinoids	28.12	281.2
Calculated Total THC	23.10	231.01
Calculated CBD Yield	0.06	0.57

Calculated Total THC = Delta-9-THC + 0.877 * THCA

Calculated Maximum CBD Yield = CBD + 0.877 * CBDA

Marin Analytics, LLC

250 Bel Marin Keys Blvd, Suite D4
Novato, CA 94949

833-321-TEST / info@marinanalytics.com

Sara Biancalana

Sara Biancalana
Chief Scientist

This sample has been tested by Marin Analytics, LLC using valid testing methodologies and a quality system. Values reported relate only to the sample tested. Marin Analytics, LLC makes no claims as to the efficacy, safety, or other risks associated with any detected or non-detected levels of any compounds reported herein. This Certificate shall not be reproduced except in full without the written approval of Marin Analytics, LLC. Copyright 2023 Marin Analytics, LLC All Rights Reserved.

Torch

Sample 627-082823-038

Pink Candy

Batch/Lot # 20230824-PC

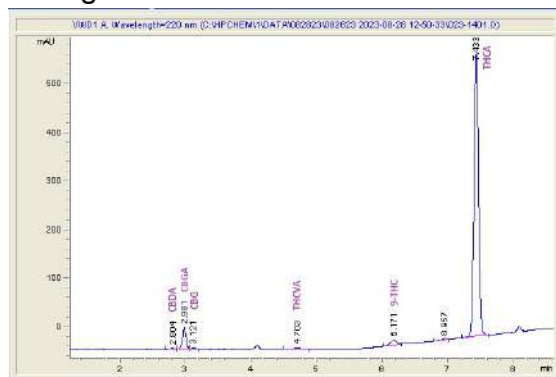
Sample Submitted: 08-28-2023; Report Date: 09-01-2023

Pink Candy

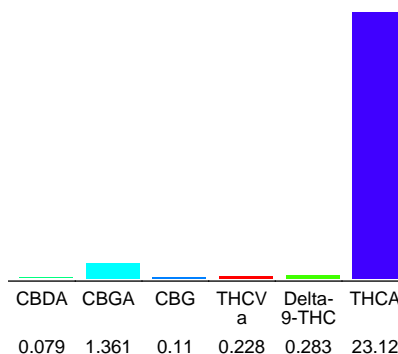
Plant Material: Flower

Batch/Lot # 20230824-PC

Chromatogram



Cannabinoid Profile



Cannabinoid Profile by HPLC

0.28%

Delta-9-THC

0.00%

CBD

25.18%

Total Cannabinoids

Cannabinoid	% wt	mg/g
CBDA	0.079	0.79
CBGA	1.361	13.61
CBG	0.11	1.1
THCVa	0.228	2.28
Delta-9-THC	0.283	2.83
THCA	23.12	231.2
Total Cannabinoids	25.18	251.8
Calculated Total THC	20.56	205.59
Calculated CBD Yield	0.07	0.69

Calculated Total THC = Delta-9-THC + 0.877 * THCA

Calculated Maximum CBD Yield = CBD + 0.877 * CBDA

Marin Analytics, LLC

250 Bel Marin Keys Blvd, Suite D4
Novato, CA 94949

833-321-TEST / info@marinanalytics.com

Sara Biancalana

Sara Biancalana
Chief Scientist

This sample has been tested by Marin Analytics, LLC using valid testing methodologies and a quality system. Values reported relate only to the sample tested. Marin Analytics, LLC makes no claims as to the efficacy, safety, or other risks associated with any detected or non-detected levels of any compounds reported herein. This Certificate shall not be reproduced except in full without the written approval of Marin Analytics, LLC. Copyright 2023 Marin Analytics, LLC All Rights Reserved.

Torch

Sample 627-082823-042

Ice Cream Cake

Batch/Lot # 20230824-ICC

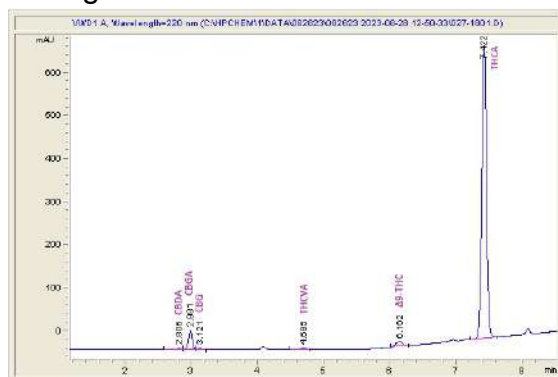
Sample Submitted: 08-28-2023; Report Date: 09-01-2023

Ice Cream Cake

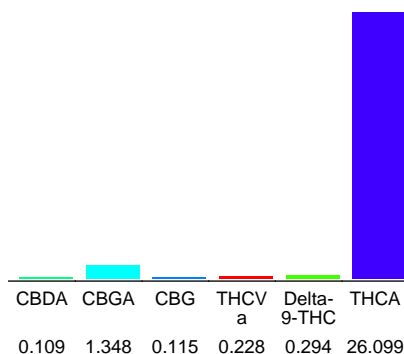
Batch/Lot # 20230824-ICC

Plant Material: Flower

Chromatogram



Cannabinoid Profile



Cannabinoid Profile by HPLC

0.29%

Delta-9-THC

0.00%

CBD

28.19%

Total Cannabinoids

Cannabinoid	% wt	mg/g
CBDA	0.109	1.09
CBGA	1.348	13.48
CBG	0.115	1.15
THCVa	0.228	2.28
Delta-9-THC	0.294	2.94
THCA	26.1	260.99
Total Cannabinoids	28.19	281.9
Calculated Total THC	23.18	231.83
Calculated CBD Yield	0.10	0.96

Calculated Total THC = Delta-9-THC + 0.877 * THCA

Calculated Maximum CBD Yield = CBD + 0.877 * CBDA

Marin Analytics, LLC
250 Bel Marin Keys Blvd, Suite D4
Novato, CA 94949

833-321-TEST / info@marinanalytics.com

Sara Biancalana
Sara Biancalana
Chief Scientist

This sample has been tested by Marin Analytics, LLC using valid testing methodologies and a quality system. Values reported relate only to the sample tested. Marin Analytics, LLC makes no claims as to the efficacy, safety, or other risks associated with any detected or non-detected levels of any compounds reported herein. This Certificate shall not be reproduced except in full without the written approval of Marin Analytics, LLC. Copyright 2023 Marin Analytics, LLC All Rights Reserved.

Torch

Sample 627-082823-037

Apple Sundae

Batch/Lot # 20230824-AS

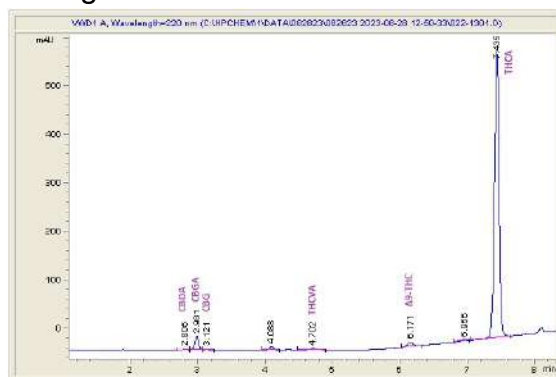
Sample Submitted: 08-28-2023; Report Date: 09-01-2023

Apple Sundae

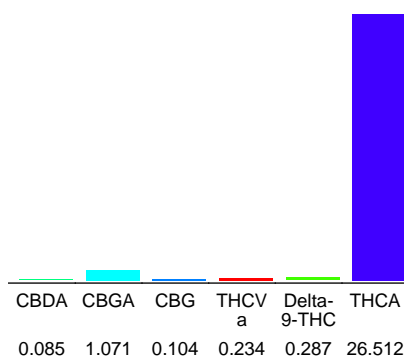
Plant Material: Flower

Batch/Lot # 20230824-AS

Chromatogram



Cannabinoid Profile



Cannabinoid Profile by HPLC

0.29%

Delta-9-THC

0.00%

CBD

28.29%

Total Cannabinoids

Cannabinoid	% wt	mg/g
CBDA	0.085	0.85
CBGA	1.071	10.71
CBG	0.104	1.04
THCVa	0.234	2.34
Delta-9-THC	0.287	2.87
THCA	26.51	265.12
Total Cannabinoids	28.29	282.9
Calculated Total THC	23.54	235.38
Calculated CBD Yield	0.07	0.75

Calculated Total THC = Delta-9-THC + 0.877 * THCA

Calculated Maximum CBD Yield = CBD + 0.877 * CBDA

Marin Analytics, LLC

250 Bel Marin Keys Blvd, Suite D4
Novato, CA 94949

833-321-TEST / info@marinanalytics.com

Sara Biancalana

Sara Biancalana
Chief Scientist

This sample has been tested by Marin Analytics, LLC using valid testing methodologies and a quality system. Values reported relate only to the sample tested. Marin Analytics, LLC makes no claims as to the efficacy, safety, or other risks associated with any detected or non-detected levels of any compounds reported herein. This Certificate shall not be reproduced except in full without the written approval of Marin Analytics, LLC. Copyright 2023 Marin Analytics, LLC All Rights Reserved.