



Cabo Ella Group

Sample 279-020422-256

D9/HHC Orange Cream White Chocolate

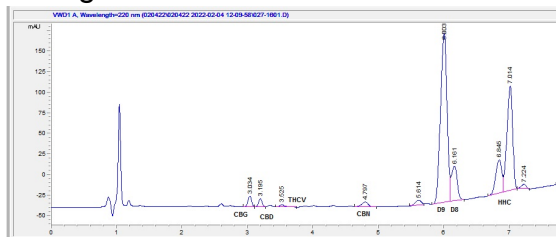
Sample Submitted: 02-04-2022; Report Date: 02-06-2022

nullSample Unit Size: 5.57 g

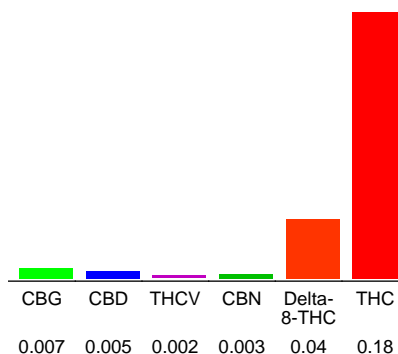
## D9/HHC Orange Cream White Chocolate

Edible: Candy

### Chromatogram



### Cannabinoid Profile



### Cannabinoid Profile by HPLC

**0.18%**  
Calculated THC Yield

**0.01%**  
Calculated CBD Yield

**0.24%**  
Total Cannabinoids

Cannabinoid	% wt	mg/unit
CBG	0.007	0.3902
CBD	0.005	0.2787
THCV	0.002	0.1115
CBN	0.003	0.1672
Delta-8-THC	0.04	2.23
THC	0.18	10.03
<b>Total Cannabinoids</b>	<b>0.24</b>	<b>13.2</b>
<b>Calculated THC Yield</b>	<b>0.18</b>	<b>10.03</b>
<b>Calculated CBD Yield</b>	<b>0.01</b>	<b>0.28</b>

Calculated Maximum THC Yield = THC + 0.877 \* THCA

Calculated Maximum CBD Yield = CBD + 0.877 \* CBDA

**Notes:** HHC 0.26(14.5mg) based on chromatogram; no reference standard is available.

**Marin Analytics, LLC**  
250 Bel Marin Keys Blvd, Suite D4  
Novato, CA 94949  
415-936-6477 / sarabiancalana1@gmail.com

*Sara Biancalana*  
**Sara Biancalana**  
Chief Scientist

This sample has been tested by Marin Analytics, LLC using valid testing methodologies and a quality system. Values reported relate only to the sample tested. Marin Analytics, LLC makes no claims as to the efficacy, safety or other risks associated with any detected or non-detected levels of any compounds reported herein. This Certificate shall not be reproduced except in full, without the written approval of Marin Analytics, LLC.



Cabo Ella Group

Sample 279-020422-255

D9/HHC Strawberry Shortcake White Chocolate

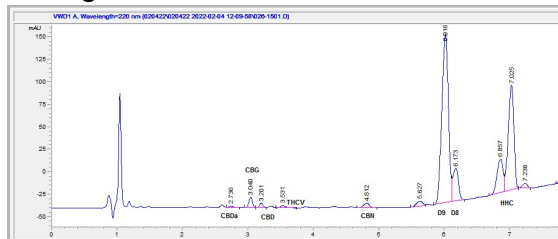
Sample Submitted: 02-04-2022; Report Date: 02-06-2022

nullSample Unit Size: 5.28 g

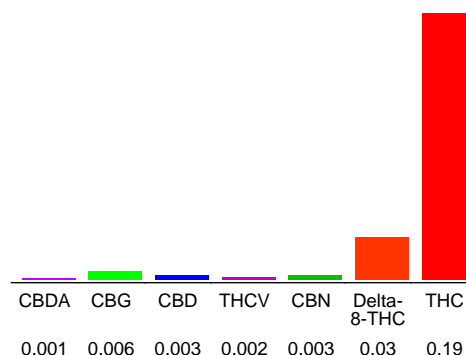
D9/HHC Strawberry Shortcake White Chocolate

Edible: Candy

## Chromatogram



## Cannabinoid Profile



## Cannabinoid Profile by HPLC

**0.19%**  
Calculated THC Yield

**0.00%**  
Calculated CBD Yield

**0.24%**  
Total Cannabinoids

Cannabinoid	% wt	mg/unit
CBDA	0.001	0.05284
CBG	0.006	0.317
CBD	0.003	0.1585
THCV	0.002	0.1057
CBN	0.003	0.1585
Delta-8-THC	0.03	1.585
THC	0.19	10.04
<b>Total Cannabinoids</b>	<b>0.24</b>	<b>12.4</b>
<b>Calculated THC Yield</b>	<b>0.19</b>	<b>10.04</b>
<b>Calculated CBD Yield</b>	<b>0.00</b>	<b>0.20</b>

Calculated Maximum THC Yield = THC + 0.877 \* THCA

Calculated Maximum CBD Yield = CBD + 0.877 \* CBDA

**Notes:** HHC 0.28(14.8mg) based on chromatogram; no reference standard is available.

**Marin Analytics, LLC**  
250 Bel Marin Keys Blvd, Suite D4  
Novato, CA 94949

415-936-6477 / sarabiancalana1@gmail.com

**Sara Biancalana**  
Chief Scientist

This sample has been tested by Marin Analytics, LLC using valid testing methodologies and a quality system. Values reported relate only to the sample tested. Marin Analytics, LLC makes no claims as to the efficacy, safety or other risks associated with any detected or non-detected levels of any compounds reported herein. This Certificate shall not be reproduced except in full, without the written approval of Marin Analytics, LLC.



Cabo Ella Group

Sample 279-020422-257

D9/HHC Toffee Milk Chocolate

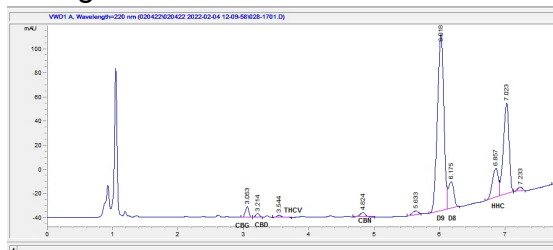
Sample Submitted: 02-04-2022; Report Date: 02-06-2022

nullSample Unit Size: 6.33 g

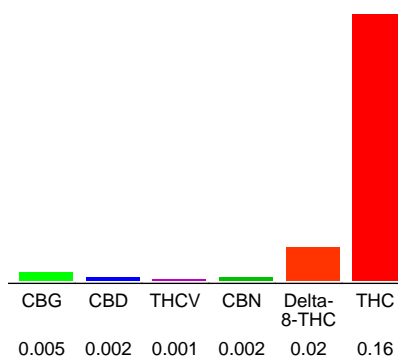
## D9/HHC Toffee Milk Chocolate

Edible: Candy

### Chromatogram



### Cannabinoid Profile



### Cannabinoid Profile by HPLC

**0.16%**  
 Calculated THC Yield

**0.00%**  
 Calculated CBD Yield

**0.19%**  
 Total Cannabinoids

Cannabinoid	% wt	mg/unit
CBG	0.005	0.3167
CBD	0.002	0.1267
THCV	0.001	0.06333
CBN	0.002	0.1267
Delta-8-THC	0.02	1.267
THC	0.16	10.13
<b>Total Cannabinoids</b>	<b>0.19</b>	<b>12.0</b>
<b>Calculated THC Yield</b>	<b>0.16</b>	<b>10.13</b>
<b>Calculated CBD Yield</b>	<b>0.00</b>	<b>0.13</b>

Calculated Maximum THC Yield =  $THC + 0.877 * THCA$

Calculated Maximum CBD Yield =  $CBD + 0.877 * CBDA$

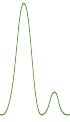
**Notes:** HHC 0.23(14.6mg) based on percentage in the chromatogram; no reference standard is available.

**Marin Analytics, LLC**  
 250 Bel Marin Keys Blvd, Suite D4  
 Novato, CA 94949

415-936-6477 / sarabiancalana1@gmail.com

**Sara Biancalana**  
 Chief Scientist

This sample has been tested by Marin Analytics, LLC using valid testing methodologies and a quality system. Values reported relate only to the sample tested. Marin Analytics, LLC makes no claims as to the efficacy, safety or other risks associated with any detected or non-detected levels of any compounds reported herein. This Certificate shall not be reproduced except in full, without the written approval of Marin Analytics, LLC.



Cabo Ella Group

Sample 279-020422-254

D9/HHC Cinnamon Toast White Chocolate

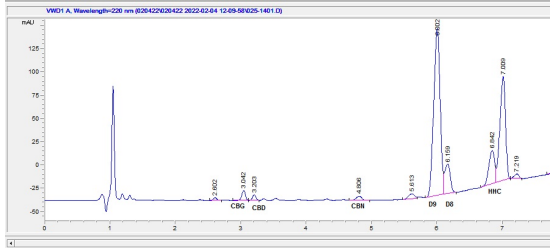
Sample Submitted: 02-04-2022; Report Date: 02-06-2022

NullSample Unit Size: 6.18 g

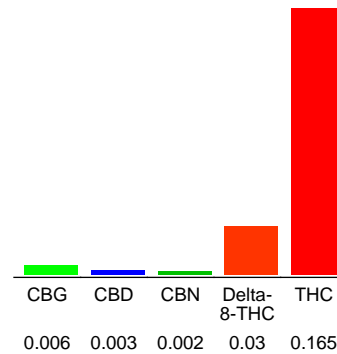
D9/HHC Cinnamon Toast White Chocolate

Edible: Candy

### Chromatogram



### Cannabinoid Profile



### Cannabinoid Profile by HPLC

**0.17%**  
Calculated THC Yield

**0.00%**  
Calculated CBD Yield

**0.21%**  
Total Cannabinoids

Cannabinoid	% wt	mg/unit
CBG	0.006	0.3706
CBD	0.003	0.1853
CBN	0.002	0.1235
Delta-8-THC	0.03	1.853
THC	0.165	10.19
<b>Total Cannabinoids</b>	<b>0.21</b>	<b>12.7</b>
<b>Calculated THC Yield</b>	<b>0.17</b>	<b>10.19</b>
<b>Calculated CBD Yield</b>	<b>0.00</b>	<b>0.19</b>

Calculated Maximum THC Yield =  $THC + 0.877 * THCA$   
 Calculated Maximum CBD Yield =  $CBD + 0.877 * CBDA$

**Notes:** HHC 0.24(14.8mg) based on chromatogram; no reference standard is available.

**Marin Analytics, LLC**  
250 Bel Marin Keys Blvd, Suite D4  
Novato, CA 94949

415-936-6477 / sarabiancalana1@gmail.com

**Sara Biancalana**  
Chief Scientist

This sample has been tested by Marin Analytics, LLC using valid testing methodologies and a quality system. Values reported relate only to the sample tested. Marin Analytics, LLC makes no claims as to the efficacy, safety or other risks associated with any detected or non-detected levels of any compounds reported herein. This Certificate shall not be reproduced except in full, without the written approval of Marin Analytics, LLC.